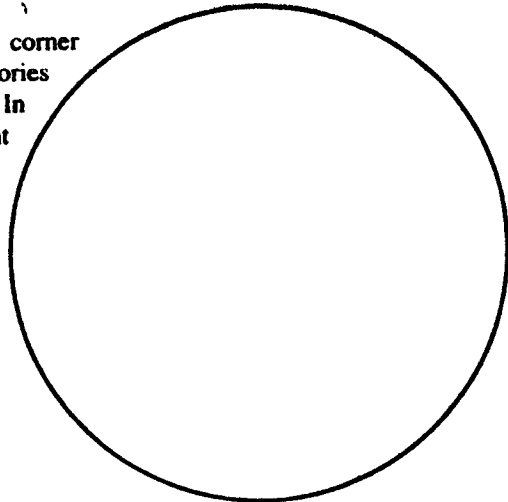


# Wyoming Certified Land Corner Recordation Certificate

This form is to be completed in accordance with W.S. 36-11-101, printed in black ink or typed, and shall be for one individual corner.

Describe below, or show in sketch attached to this form, the corner evidence found. Include condition and type of monument, accessories and ties. Describe any maintenance or rehabilitation performed. In the circle to the right, show monument inscription. If monument is determined lost or obliterated, restate the GLO or BLM original field note record; describe or show the procedure used to reestablish the corner and all data as above for a found monument.



Field Date 6/15/90 Office Reference 2130

Record: 1977 Certified Land Corner Recordation filed by William Braman, LS 566 shows an iron pipe found and accepted in road intersection. Mr. Braman set 5/8" rebars with alum. caps as references to the corner.

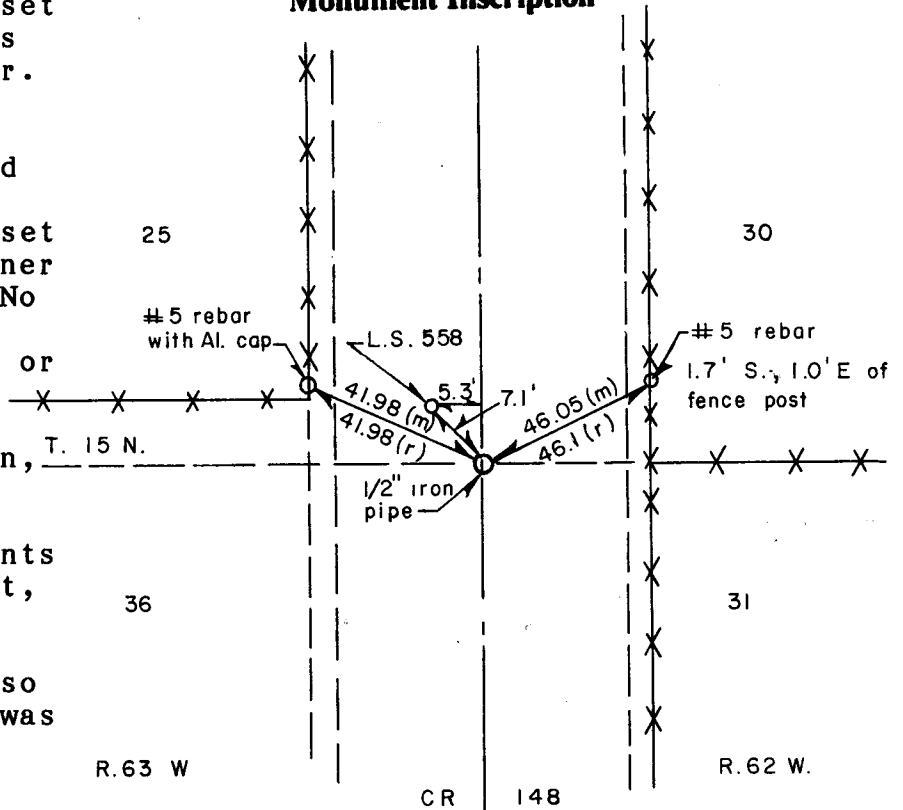
1988 Certified Land Corner Recordation filed by Donald Hopkins, PE-LS 558 (form shows only "558") states "set 5/8" rebar and cap, SW corner Sec. 30, T.15 N., R.62 W." No mention of searching for previously accepted corner or of setting references.

Evidence found: Jeffrey Jones, under my supervision, found a 1/2" iron pipe in the road intersection and accompanying reference points including, to the northwest, a #5 rebar with alum. cap stamped LS 566 and, to the northeast, a #5 rebar. Also found in the intersection was a #5 rebar with alum. cap, stamped LS 558.

Conclusion: The rebar and cap set by Donald Hopkins was not accepted. The 1/2" iron pipe was accepted as the section corner. See sketch for record and measured ties to references and for ties to fences.

State of Wyoming  
Office of County Clerk  
County of Laramie

Monument Inscription



(m) = measured 1990  
(r) = record, 1977 corner form

This Certified Land Corner Recordation Certificate was filed for record on the \_\_\_\_\_ day of \_\_\_\_\_, 19\_\_\_\_, in Book No. T 15 N., R 63 W., on Alpha-Numeric coordinates V-25 and was noted on the Cross Index Plat.

Section(s) 25 30 36 31 Meridian 6th Page \_\_\_\_\_  
 Township 15 N. Range 63 R. Sheet \_\_\_\_\_ of \_\_\_\_\_  
 Corner Type:  Aliquot Corner  Other  
 Corner Name \_\_\_\_\_

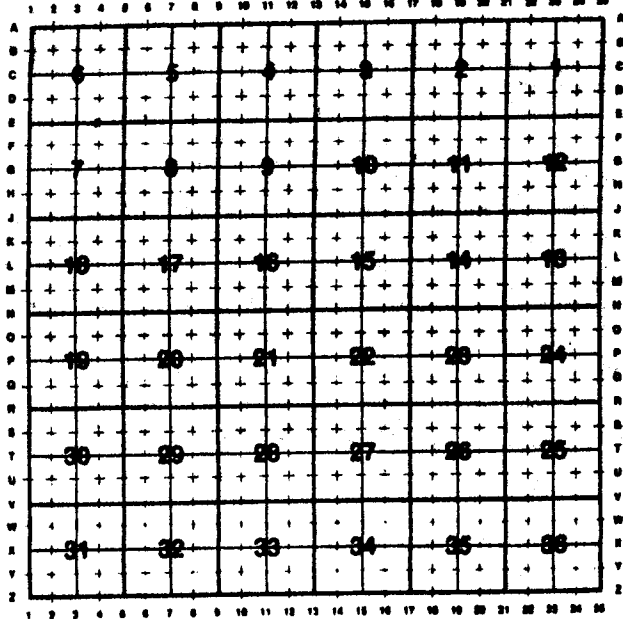
RECEIVED  
 LARAMIE COUNTY  
 CHEYENNE, WY.  
 '90 JUL 27 PM 3 01  
 072980

**Directions for using the  
Cross Index Plat**

Section, quarter and sixteenth corners will be marked with a dot at the corner location. The alpha-numeric coordinate number is then determined for the intersection of the two lines. A corner that applies to two or more townships shall be filed under all that apply by the use of photo copies.

Closing corners will be indexed under the township in which they control ownership. For 1/64, 1/256, 1/1024 and non-aliquot corners lying between grid designations, mark the appropriate grid area with a dot and use the index code to the north and west (local systems may be used if the method is approved by the County Surveyor or Clerk and a written description of its use is filed in the front of each book of certificates).

**Cross Index Plat**



**State Plane Coordinates (optional)**

Zone      W      WC      EC      E      feet/meters

NAD 1927       NGVD 1929       NAD 1983       NAVD 1988

North (Y) = \_\_\_\_\_ East (X) = \_\_\_\_\_ EL = \_\_\_\_\_

Latitude \_\_\_\_\_ Longitude \_\_\_\_\_

Scale Factor \_\_\_\_\_ Geoid Height \_\_\_\_\_

**Certification**

I, Becky J. Braman, Wyoming PLS-PE 3881 certify that I, or others under my supervision, have performed the work as described above and completed this form.

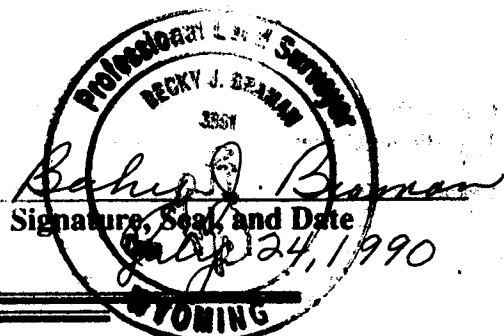
Company or Agency Intermountain Professional Services, Inc.

Mailing Address 1816 Central Avenue

Street Address \_\_\_\_\_

City, State, ZIP Cheyenne, Wyoming 82001

Telephone, FAX 307-632-3138 Fax 307-632-3194



Sheet \_\_\_\_\_ of \_\_\_\_\_